

The Family Tree

SUMMER 2014

LAST WINTER'S IMPACT ON SUMMER LANDSCAPES

With the summer months here, we're now aware of the full effects the brutal winter has had on our customers' landscapes.

Among the hardest hit trees and shrubs were:

BUTTERFLY BUSHES

These typically die back, but this year even their roots died. If yours is showing sprouts near the ground, you might be lucky. Cut it down to where the new growth is, and it could recover.

CRAPE MYRTLE

Although hardy, this winter killed some. If you see buds or growth from its roots, or if it has some green in its stem, it may survive. If not, then it's time to remove and replace it.

LEYLAND CYPRESS

Many trees have branch ends that have turned brown and died. If you see live growth on the branches, trim them back to the new growth and apply a light fertilizer to help your tree recover.

CHERRY LAUREL AND CHINESE HOLLY

They've suffered a lot of winter burn (leaves have turned brown and fallen off). In most cases, however, the entire plant hasn't died. Trim them back to where you see live growth and lightly fertilize them.



Consider planting trees and shrubs that are native to Pennsylvania. They're acclimated to our hardiness zone and have better odds of surviving. —**MARK SPANGENBERG**

GRUESOME GRUBS

WHY PREVENTION IS THE BEST POLICY TO PROTECT YOUR LAWN



Grubs (larvae of beetles) can do some serious damage to your lawn in the late summer if you don't take action to control them right now.

Prevention is the way to go! Waiting until they've wreaked havoc is often too late to treat them.

ADVANTAGES OF PREVENTIVE GRUB TREATMENTS OVER CORRECTIVE TREATMENTS

ENVIRONMENTALLY SOUND

Preventive treatments are designed to control the grubs that eat your grass, but they won't harm beneficial insects like the praying mantis and ladybug. Corrective treatments do not discriminate. That means all insects (bad and good) will be harmed if they make contact with them.

PEACE OF MIND

Preventive treatments are an insurance policy against lawn damage by grubs. They are applied early, before your lawn is under attack.

BETTER RESULTS

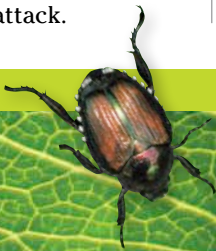
You can expect preventive treatments to do a better job because they are used early in the season and control grubs before they inflict harm on your grass. Corrective treatments, on the other hand, force you to play catch up.

If you have questions about grub control for your lawn, give us a call.



Treat in June and July so your grass is protected when grubs hatch in August.

—LARRY BELLUSCIO





**World-class care.
Right in your backyard.**

Follow us to
get valuable
information
and timely
expert advice.



THANK YOU FOR YOUR VOTE OF CONFIDENCE!

Thanks to all who voted for us in the *York Sunday News* 2014 "Best in York County" reader poll!

We're honored to have been named one of the best landscaping service companies. We appreciate your loyalty and support of our company!



P R E S I D E N T ' S M E S S A G E

Dear Heritage Customers,

Summertime Greetings! I hope you're enjoying the warm weather and the beauty of your own lawn and landscape this season. It's hard to imagine now, but a little less than four months ago we were still in the throes of a brutal and exceptionally long winter. I'm glad it's a fleeting memory now. How about you?

During that lingering, cold winter, we were busy redefining and solidifying our Mission at Heritage. I believe our new Mission Statement not only clearly shares what Heritage Lawn & Landscape Care stands for as a professional service provider but also delineates what drives our team to be so much more than providers of good service. Please visit our website at www.HeritageLawnAndLandscape.com/mission to read about our mission, and feel free to browse to learn more about our services while you're there.

I'm proud to be at the helm of an organization full of people who are caring, considerate, and ever-striving to improve themselves and the world around them.

Sincerely,

Tom Bechtel, CEO

To learn more, visit our website at HeritageLawnAndLandscape.com.

NOW IS THE IDEAL TIME TO ENHANCE YOUR OUTDOOR SPACE WITH LANDSCAPING

FEATURED LANDSCAPING SERVICES

IRRIGATION SYSTEMS

Irrigation systems will keep your grass and other plants looking good during the harshest time of year for Pennsylvania landscapes. They give you a way to manage how much water goes on your lawn, trees, and ornamental plants, and they can be adjusted each season. If you're already on a watering regimen, these systems can help you conserve water because they prevent over-watering. Another advantage is that they cover an entire area and eliminate the need to move sprinklers from here to there.

HARDSCAPING

Hardscaping will give your home that extra dash of curb appeal and make it an all-time favorite place to entertain guests. At Heritage, we conceptualize, create, and install patios, fire pits, outdoor kitchens, walkways, and more. With a designer on staff, we create computer-generated 3-D renderings of your hardscaping project so you can see the idea come to life before you sign the contract to have the work done.

At Heritage, we also do mulching, pond installation, lighting, drainage improvements, and more.

CHECK OUT OUR SPECIAL OFFER ON THE BACK PAGE OF THIS NEWSLETTER AND SAVE BIG ON YOUR NEXT LANDSCAPING PROJECT!



TREE OF THE QUARTER TRICOLOR BEECH

Tricolor Beech trees are known for their spectacular leaf foliage. The full beauty of their tri-colored green, white, and pink leaves starts to reveal itself this time of year.

If you have the space for one and want a visually interesting tree for your landscape, you'll want to give the Tricolor Beech some thought. They have an egg-shaped form with wide, low branches and normally grow to between 40 and 60 feet tall. They're especially stunning when accented with uplights to make them a focal point of a landscape.





THE DO'S & DON'TS OF WATERING

Watering grass, trees, and shrubs

will help them weather drought and scorching temperatures. But how much is enough or too much? We hear that question a lot, and we're here to help!

First, your trees and shrubs (especially those 3 years old or younger) need to be watered. Many people think their lawns need watering more, but your grass has the capacity to go dormant to protect itself in heat and dry conditions. It's able to regenerate, while trees and shrubs don't bounce back nearly as well.

Check out these other pointers, too:

SUMMER WATERING DO'S AND DON'TS

DO WATER BETWEEN 5 AND 10 A.M.

Water soaks in best during the early morning hours. Plus, watering in the morning gives time for foliage to dry so excess moisture doesn't cause problems for your plants and grass.

DO WATER THOROUGHLY. It's better to water infrequently and thoroughly than to water often and lightly. This allows

moisture to go deeper into the soil where it strengthens the root systems of plants.

DO USE A RAIN GAUGE WHEN WATERING. Put it in the middle of the area you're watering so you can measure the water you apply. We recommend one inch per week for established turf. Younger turf may require more.

DO CONSIDER GETTING GATOR BAGS FOR WATERING TREES. They allow water to slowly percolate through the bag and get to the root system rather than run off.

DON'T OVER-WATER. It could cause root rot.

DON'T START A WATERING REGIMEN AND THEN STOP. Stay consistent with your watering routine. If you don't, your grass might not recognize it needs to go dormant to protect itself even when not getting enough water to thrive. Tree and shrub roots could die if watering stops.

Look for more helpful tips on landscape care in our next issue! —STEVE COOK

WHAT YOU NEED TO KNOW BEFORE YOU MOW

- Keep your mower blades sharp.
- Cut at a height of 3" to 4".
- Avoid mowing during the heat of day.
- Don't remove more than one-third of the grass blade in a single mowing.
- Collect clippings in spring and fall, and mulch them in the summer.
- Alternate between mowing horizontally and vertically across your lawn.
- When in drought, don't mow.

We do all the work. You get all the glory.

Make your home's landscape **the envy of the neighborhood.**

Save up to \$100 on landscaping services!
landscaping | tree or shrub trimming | landscape drainage
landscape lighting | irrigation | hardscaping

\$50
off any
purchase
over \$500

\$100
off any
purchase
over \$2,000

Call
717.292.9994
today!

Connect with us
on Facebook! 

Some restrictions apply. Offer subject to change. HeritageLawnAndLandscape.com

Let our team of landscape professionals transform your outdoor space into one that's the talk of the town. We'll create a design to fulfill your vision, install plants and hardscape features, and maintain your landscape so it always looks extraordi-

4741 Biesecker Road
Thomasville, PA 17364

717.292.9994

The **FamilyTree**
is a publication of Heritage Lawn
& Landscape Care.

Editors

Tom Bechtel
Dawn Mentzer

E-mail

heritagelawnandlandscape@gmail.com

Website

HeritageLawnAndLandscape.com

Graphics

Burgard Design

Proofreader

Gregg Dubbs

SUMMER 2014

The Family Tree © 2014 by
Heritage Lawn & Landscape Care.
All rights reserved.

The FamilyTree

SUMMER 2014



World-class care.
Right in your backyard.